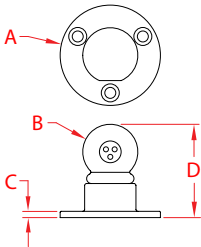


TRI STAR SURFACE MOUNT LIGHT

HOUSING: 316 STAINLESS



ITEM

A

B

C

D

COLOR FAST.

WT

(size)

(lb)

12 VOLT DC

S0803-1000

1-1/8"

2.00"

0.13"

1.86"

white

#8

0.40

CAUTION: USE DC TRANSFORMER ONLY

NOTE:

Self-contained ball housing with 3 LED lights. Mounts to surfaces using 3, #8 screws. Ideal for mounting to railing posts for surface illumination. Use with the low voltage transformer (Micro Star™ Transformer) and wiring.

